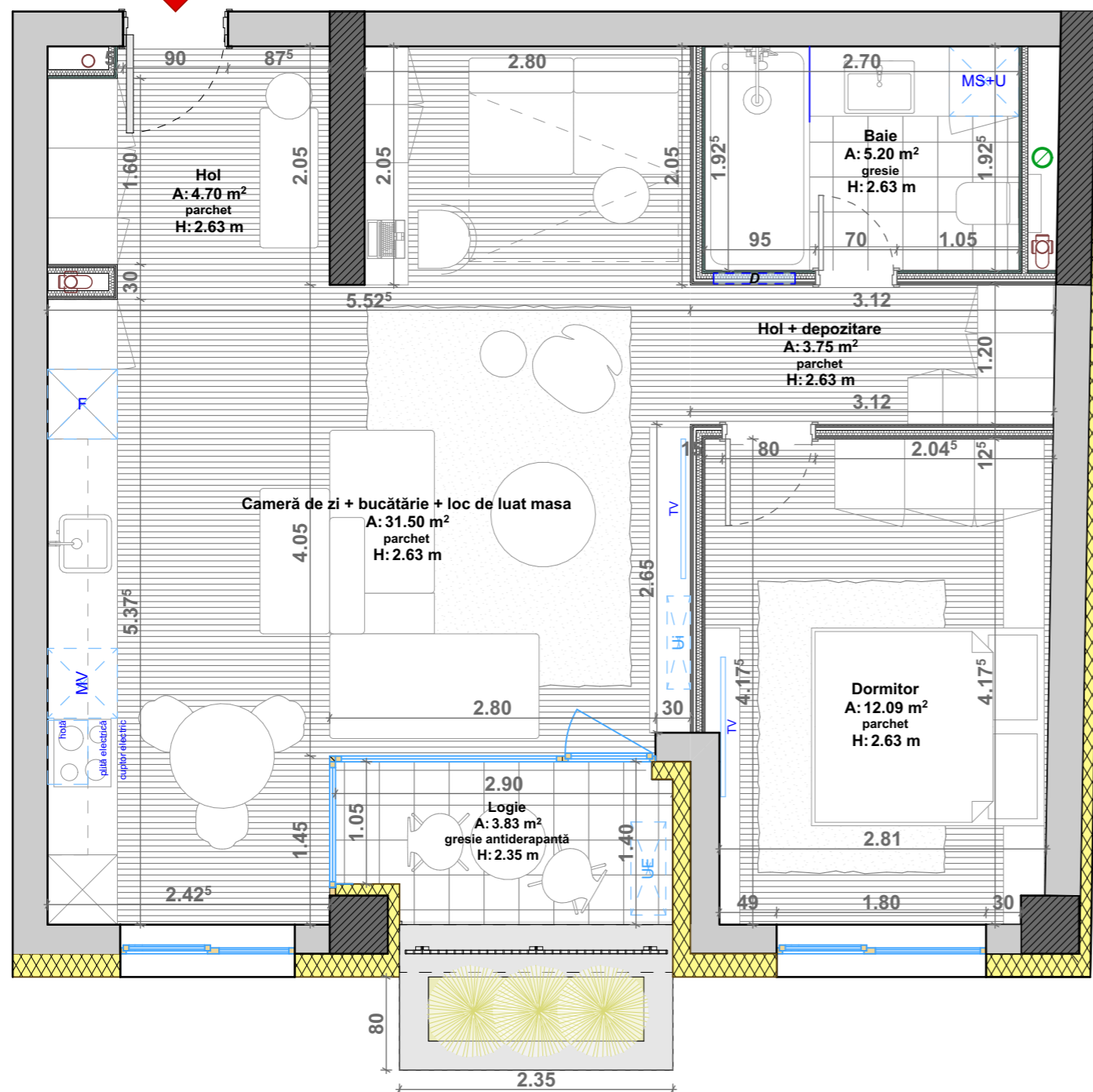


AP 11|21|51
S util= 57,24 m²



APARTAMENT TIP "B7" 2 CAMERE

SUPRAFATA UTILA = 57,24mp

DENUMIRE INCAPERE	SUPRAFATA
Hol	4,70mp
Baie	5,20mp
Camera de zi+bucatarie	31,50mp
Hol si depozitare	3,75mp
Dormitor	12,09mp
Logie	3,83mp

Apartament nr. 11, 21, 51



VIVALIA
LIPOVEI